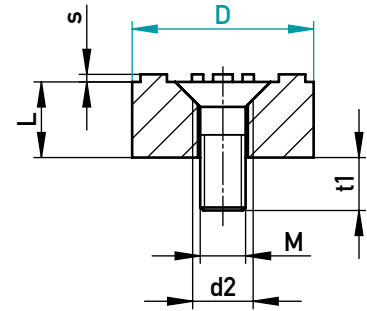




KENNZEICHNUNGSSTEMPEL

MARKING STAMP



AUF EINEN BLICK




- › Für Schäum- und Tiefziehwerkzeuge
- › Montierbar von vorne
- › Gravur spiegelbildlich erhaben
- › Passender Stelleinsatz 600073

AT A GLANCE

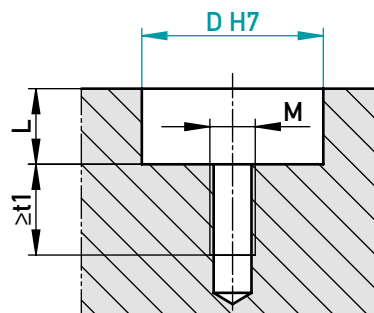
- › For foam and deep-drawing moulds
- › Mountable from the front
- › Engraving inversely raised
- › Matching insert type 600073

Ⓜ Messing / Brass MS58, 1.4034 gehärtet (hardened)

D	Ø 10	Ø 12
L	5	5
s	0,5	0,5
M	M3	M3
d2	M4	M4
t1	3,5	3,5

Typ/Type	D		✉
	10	12	
01  Monate + Jahr Months + Year	•	•	600501/01/D-Jahr 600501/01/D-Year
02  Monate Months	•	•	600501/02/D 600501/02/D
03  Jahr + 5 Jahre Year + 5 Years	•	•	600501/03/D-Jahr 600501/03/D-Year

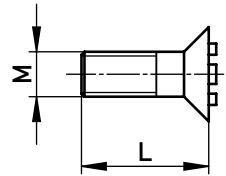
EINBAURAUM · MOUNTING SPACE







STELLEINSATZ FÜR 600501

ADJUSTABLE INSERT FOR 600501



1.4034 / ~56 HRC

D	Ø 10	Ø 12
L	8,5	
M	M3	

Typ/Type	D		☒
	10	12	
98  Pfeil Arrow	•	•	600073/98/D 600073/98/D
99  Pfeil + Jahr Arrow + Year	•	•	600073/99/D-Jahr 600073/99/D-Year