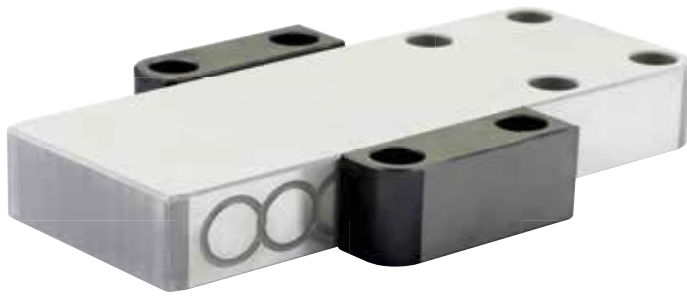


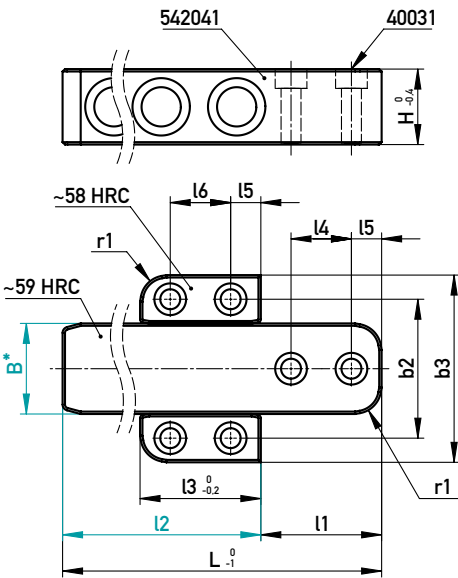


FLACHFÜHRUNG - GEHÄRTET
FLAT GUIDING - HARDENED

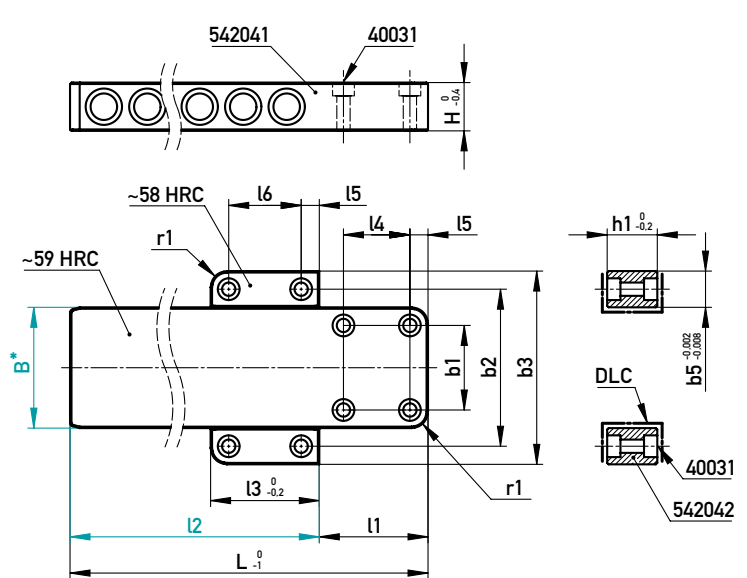


B*
30 ^{-0,002} _{-0,010}
40 ^{-0,002} _{-0,010}
60 ^{-0,002} _{-0,012}
80 ^{-0,004} _{-0,016}
100 ^{-0,004} _{-0,016}
120 ^{-0,005} _{-0,020}
150 ^{-0,005} _{-0,020}

Typ 1
Type 1



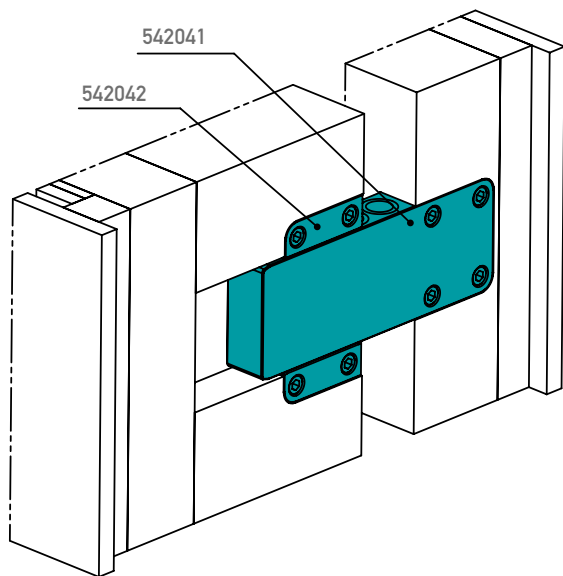
Typ 2
Type 2



1.7131 / 1.2162; 1.2842 + DLC

Typ/ Type	40031	r1	l6	l5	l4	b3	b2	b1	542042			542041				€/1	
									b5	l3	h1	l1	L	H	B		l2
1	6x M6-30	8,5	20	10	20	62	46	-	16	40	25,8	40	85	25	30	45	•
													105	25	30	65	•
													135	25	30	95	•
1	4x M6-30; 2x M8-30	8,5	20	10	25	72	56	-	16	40	25,8	45	100	25	40	55	•
													120	25	40	75	•
													140	25	40	95	•
													160	25	40	115	•
													200	25	40	155	•
2	8x M8-35	11	36	12	36	110	85	36	25	60	31	65	150	30	60	85	•
													180	30	60	115	•
													220	30	60	155	•
2	8x M10-45	13	60	15	45	140	110	50	30	90	41,5	75	170	40	80	95	•
													200	40	80	125	•
													240	40	80	165	•
													265	40	100	175	•
2	8x M10-45	13	60	15	55	160	130	70	30	90	41,5	90	225	40	100	135	•
													265	40	100	175	•
													325	40	100	235	•
													345	45	120	145	•
													295	45	120	195	•
2	8x M12-55	16	80	20	60	190	155	80	35	120	47	100	245	45	120	145	•
													295	45	120	195	•
													345	45	120	245	•
													395	45	120	295	•
													395	45	150	285	•
2	8x M12-55	16	80	20	70	220	185	110	35	120	47	110	295	45	150	185	•
													395	45	150	285	•
													495	45	150	385	•

542040/B-12



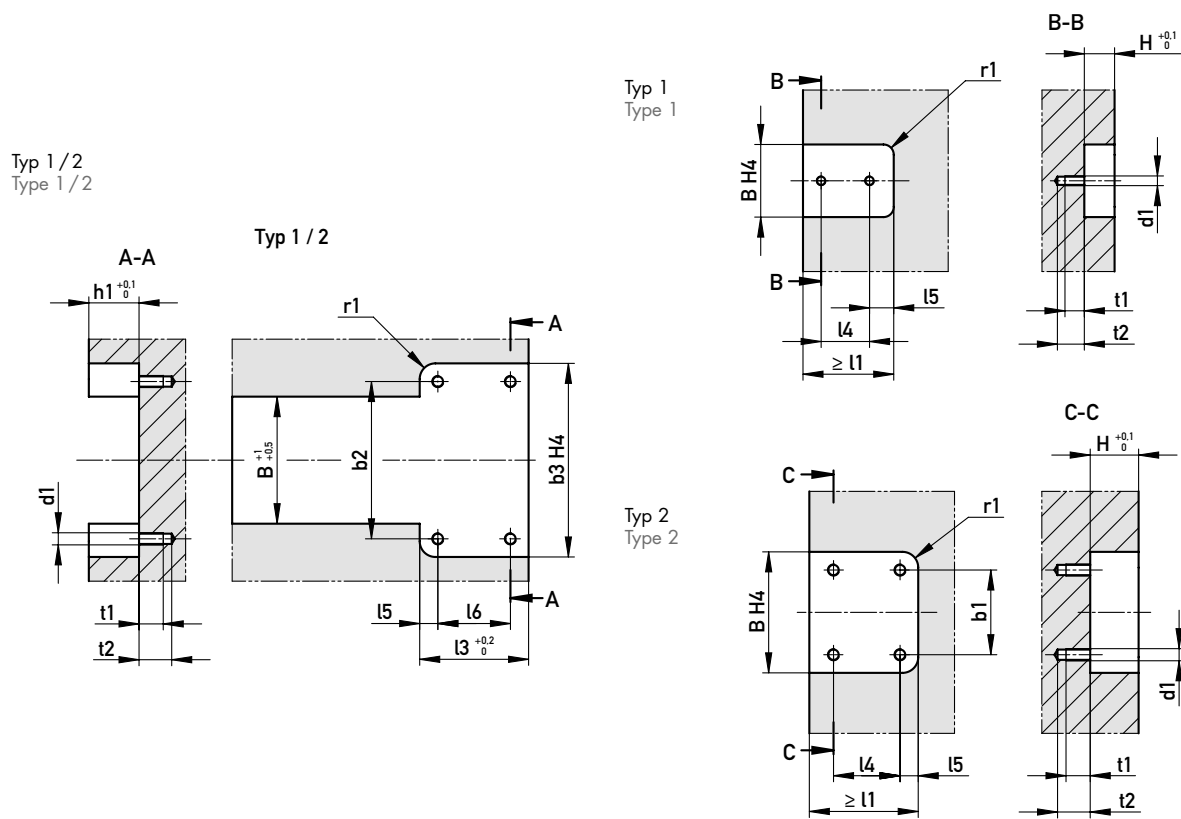
AUF EINEN BLICK

- ▶ Einfache Einarbeitung und Montage
- ▶ Umfangreiches Sortiment ab Lager verfügbar
- ▶ Optimale Gleit- und Trockenlauf Eigenschaften durch DLC-Beschichtung
- ▶ Zusätzliche Schmiernuten
- ▶ Als Set oder einzeln erhältlich

AT A GLANCE

- ▶ Simple machining and mounting
- ▶ Extensive range available from stock
- ▶ Optimal gliding and dry run properties achieved by DLC coating
- ▶ Additional oil grooves
- ▶ Available as a set or as single parts

INBAURAUM · MOUNTING SPACE



Typ/Type	d1	t1	t2	r1	l6	l5	l4	b3	b2	b1	l3	h1	l1	H	B
1	6x M6	16	22	8,5	20	10	20	62	46	-	40	25,8	40	25	30
1	4x M6; 2x M8	16	22	8,5	20	10	25	72	56	-	40	25,8	45	25	40
2	8x M8	16	22	11	36	12	36	110	85	36	60	31	65	30	60
2	8x M10	20	27	13	60	15	45	140	110	50	90	41,5	75	40	80
							55	160	130	70	90	41,5	90	40	100
2	8x M12	24	32	16	80	20	60	190	155	80	120	47	100	45	120
							70	220	185	110	120	47	110	45	150