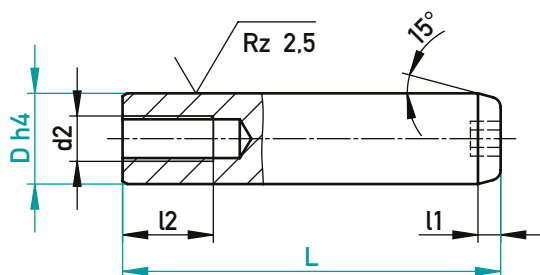
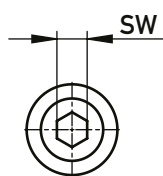




KUGELFÜHRUNGSBOLZEN OHNE BUND

GUIDE BOLT FOR BALL GUIDING UNIT, WITHOUT COLLAR



1.7147/60-62 HRC

SW	l1	l2	d2	D	L	€/1
4	4	16	M6	10	60	•
					80	•
					100	•
					120	•
					140	•
5	4	17	M8	12	80	•
					100	•
					120	•
					140	•
					160	•
6	5	20	M10	18	80	•
					100	•
					120	•
					140	•
					160	•
8	6	25	M12	24	100	•
					120	•
					140	•
					160	•
					180	•
					200	•
					220	•
					240	•
					260	•
					280	•

SW	l1	l2	d2	D	L	€/1
8	7	30	M16	30	120	•
					140	•
					160	•
					180	•
					200	•
10	7	30	M16	40	140	•
					160	•
					180	•
					200	•
					220	•
					240	•
					260	•
					280	•
					300	•
					320	•

51156/DxL