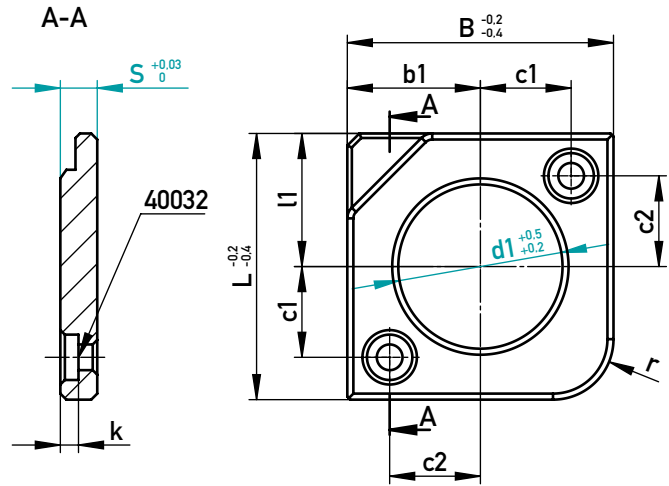




## DRUCK-/ABSTIMMPLATTE

### WEAR-/SHIM PLATE



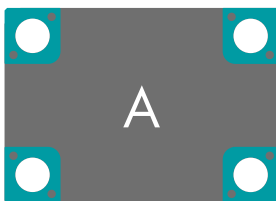
✓ 2x 40032 im Lieferumfang / in scope of delivery

⊕ 1.2842 / ~58 HRC

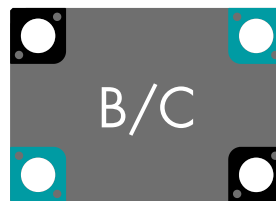
System System	40032	k	c1	c2	r	b1	l1	B	L	d1	Form Shape	Typ Type	S	€/1	☒	
<b>F</b>	M6-16	5	18	12	12	20	20	46	46	● 26	A	1	10,2	•	4 x ☒	
			18	16	12	24	24	50	50	● 30	A	1	10,2	•	4 x ☒	
	M8-20	6	23	25	16	36	36	70	70	● 42	A	1	12,2	•	4 x ☒	
			30	30	20	44	44	88	88	● 54	A	1	12,2	•	4 x ☒	
<b>K</b>	M6-16	5	38	38	25	58	58	116	116	● 66	A	1	12,2	•	4 x ☒	
			16	18	12	26	26	50	50	■ 30	A	3	10,2	•	4 x ☒	
				15	16	12	23	26	48	48	◆ 30	B	1	10,2	•	2 x ☒
				15	16	12	26	23	48	48	◆ 30	C	1	10,2	•	2 x ☒
				14	17	12	24	28	48	48	▲ 30	B	2	10,2	•	2 x ☒
				14	17	12	28	24	48	48	▲ 30	C	2	10,2	•	2 x ☒
		M8-20	6	23	25	16	36	36	70	70	● 42	A	1	12,2	•	4 x ☒
				20	25	16	36	40	70	70	▲ 42	B	2	12,2	•	2 x ☒
				20	25	16	40	36	70	70	▲ 42	C	2	12,2	•	2 x ☒
				28	34	20	52	52	98	98	● 54	A	2	12,2	•	4 x ☒
-	M10-25	7	50	50	30	74	74	148	148	★ 80	A	1	16,2	•	4 x ☒	

☒ 51058/d1-Form-Typ-S

### FORM · SHAPE



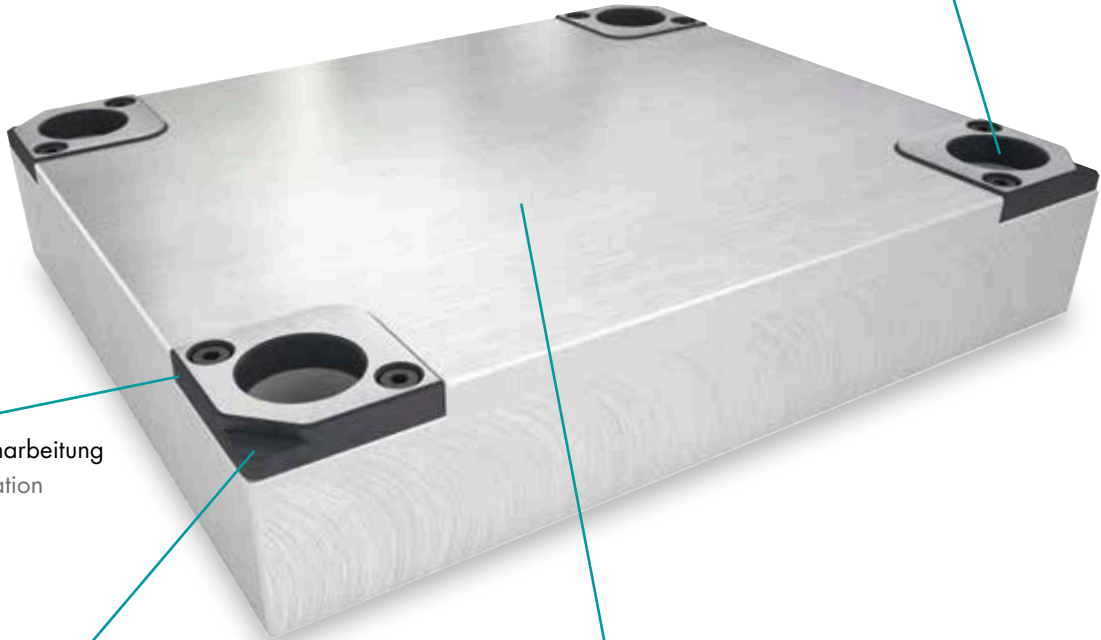
Die Abstände der Führungsbohrungen zu den Außenkanten sind identisch. Die Druckplatten sind in allen vier Positionen austauschbar.  
The distances between the guiding bores to the outer edges are identical. The wear/shim plates are interchangeable in all four positions.



Die Abstände der Führungsbohrungen zu den Außenkanten sind nur diagonal identisch. Es kommt je ein Druckplattenpaar der Formen B und C zum Einsatz.  
The distances between the guiding bores and the outer edges are only identical diagonally. Respectively one pair of wear plates of the forms B and C is used.

- ▶ Gewährleistung exakter Werkzeugparallelität über komplette Plattengröße  
Ensuring exact parallelism of the tool over the entire plate size

- ▶ Freimachung für Führungselemente in verschiedenen Durchmessern (26, 30, 42, 54, 66, 80 mm)  
Clearance for guiding elements in different diameters (26, 30, 42, 54, 66, 80 mm)



- ▶ Einfache Einarbeitung  
Easy installation

- ▶ Erleichterte Demontage durch integrierte Abhebe-Ecken  
Facilitated disassembly through integrated lifting-corners

- ▶ Effektive und platzsparende Positionierung ermöglicht größtmögliche Flächennutzung  
Effective and space-saving positioning allows maximum utilization of space

## ÜBERSICHT ZU DEN FÜHRUNGSDURCHMESSERN · OVERVIEW OF THE GUIDE DIAMETERS

SYSTEM F

B	L	196	246	296	346	396	446	496	546	596	646	696	746	796	896	996	1096	1196
196		○	○	○	●	●	●	●										
216			○	○														
246			○	●	●	●	●	●	●	●	●	●						
296				●	●	●	●	●	●	●	●	●	●					
316					●	●	●	●	●	●	●	●	●					
346					●	●	●	●	●	●	●	●	●	●				
396						●	●	●	●	●	●	●	●	●	●			
446							●	●	●	●	●	●	●	●	●	●		
496								●	●	●	●	●	●	●	●	●	●	
546									●	●	●	●	●	●	●	●	●	●
596										●	●	●	●	●	●	●	●	●
646											●	●	●	●	●	●	●	●
696												●	●	●	●	●	●	●
746													●	●	●	●	●	●
796														●	●	●	●	●
896															●	●	●	●
996																○	○	○

d1: ○ 26 ● 30 ● 42 ● 54 ○ 66

SYSTEM K

B	L	246	296	346	396	446	496	546	596	646	696	796	896	996
196			◆	◆	■	■	■							
218			◆											
246		●	◆	■	▲	■	■	■	■					
296			◆	■	▲	■	■	■	■	●	●			
346				■	▲	●	▲	●	●	●	●	●		
396					●	●	●	▲	●	●	●	●	●	
446						●	●	●	●	●	●	●	●	
496							●	●	●	●	●	●	●	●
546								●	●	●	●	●	●	●
596									●	●	●	●	●	●
646										●	●	●	●	●
696											●	●	●	●
746												●	●	●
796													●	●

d1: ● 30 ■ 30 ◆ 30 ▲ 30 ● 42 ▲ 42 ● 54