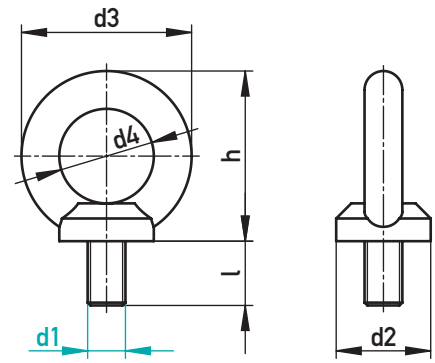






## RINGSCHRAUBE – NICHTROSTEND

### EYE BOLT – STAINLESS STEEL



A2, DIN 580

 max. kg*	 max. kg*	l	d2	d3	d4	h	d1	€/1
140	100	13	20	36	20	36	M8	•
230	170	17	25	45	25	45	M10	•
340	240	20,5	30	54	30	53	M12	•
700	500	27	35	63	35	62	M16	•
1200	860	30	40	72	40	71	M20	•

\* Weitere Informationen und aktuelle Nutzungshinweise entnehmen Sie bitte der Bedienungsanleitung.  
You will find additional information and current terms of use inside the instruction manual.

✉ 40810/d1

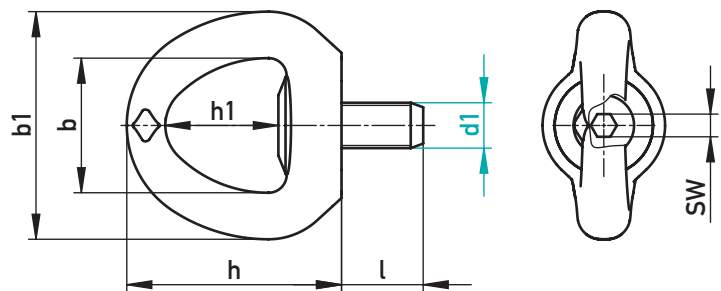


## RINGSCHRAUBE, DREHBAR – NICHTROSTEND



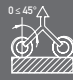
### EYE BOLT, REVOLVABLE – STAINLESS STEEL



**CODIPRO**  
LIPA



max. kg Sicherheitsfaktor 5:1 / max. kg safety factor 5:1

 max. kg*	 max. kg*	 max. kg*	l	b	b1	h	h1	SW	Drehmoment Torque (Nm)	Gewicht Weight (kg)	d1	€/1
550	550	770	21	45	90	80	38	8	15	0,8	M12	•
1200	1200	1680	27	45	90	80	38	8	50	0,82	M16	•
1500	1500	2100	30	45	90	80	38	8	100	0,84	M20	•
2500	2500	3500	36	45	90	80	38	8	100	0,9	M24	•

\* Weitere Informationen und aktuelle Nutzungshinweise entnehmen Sie bitte der Bedienungsanleitung.  
You will find additional information and current terms of use inside the instruction manual.

✉ 40811/d1