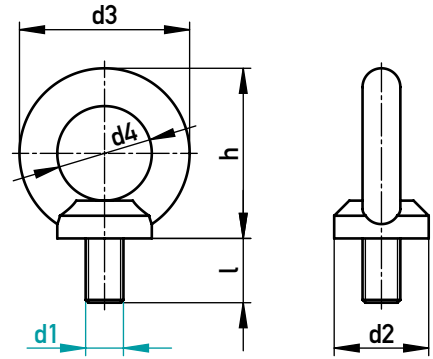







RINGSCHRAUBE
EYE BOLT



C15E, DIN 580

 max. kg*	 max. kg*	 max. kg*	l	d2	d3	d4	h	d1	€/1
140	100	13	13	20	36	20	36	M8	•
230	170	17	17	25	45	25	45	M10	•
340	240	20,5	20,5	30	54	30	53	M12	•
700	500	27	27	35	63	35	62	M16	•
1200	860	30	30	40	72	40	71	M20	•
1800	1290	36	36	50	90	50	90	M24	•
3200	2300	45	45	65	108	60	109	M30	•
4600	3300	54	54	75	126	70	128	M36	•
6300	4500	63	63	85	144	80	147	M42	•
8600	6100	68	68	100	166	90	168	M48	•

* Weitere Informationen und aktuelle Nutzungshinweise entnehmen Sie bitte der Bedienungsanleitung.
You will find additional information and current terms of use inside the instruction manual.

☒ 40710/d1



RINGSCHRAUBE, DREHBAR
EYE BOLT, REVOLVABLE

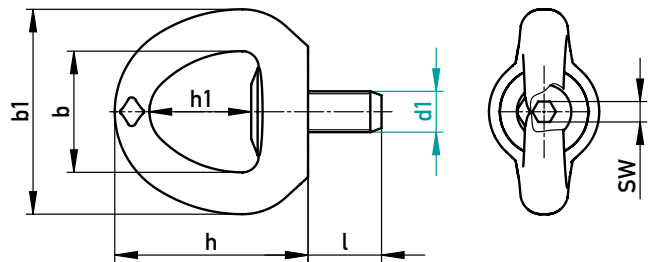


AUF EINEN BLICK




▶ Unter Last drehbar

AT A GLANCE

▶ Revolvable under load



max. kg Sicherheitsfaktor 4:1 / max. kg safety factor 4:1

 max. kg*	 max. kg*	 max. kg*	l	b	b1	h	h1	SW	Drehmoment Torque (Nm)	Gewicht Weight (kg)	d1	€/1
800	500	700	14	34	60	57	30	6	6	0,24	M8	•
1600	700	980	17	34	60	57	30	6	10	0,24	M10	•
1900	900	1260	21	34	60	57	30	6	15	0,24	M12	•
3200	1800	2520	27	45	88	80	38	8	50	0,8	M16	•
6500	2700	3780	30	45	88	80	38	8	100	0,8	M20	•
8000	3800	5320	36	45	88	80	38	14	160	0,8	M24	•
10000	6300	8820	45	70	115	106	58	14	250	2,7	M30	•
12000	11000	15400	54	94	168	155	83	14	320	7,0	M36	•
15000	15000	21000	63	94	168	155	83	14	400	7,0	M42	•

* Weitere Informationen und aktuelle Nutzungshinweise entnehmen Sie bitte der Bedienungsanleitung.
You will find additional information and current terms of use inside the instruction manual.

☒ 40711/d1