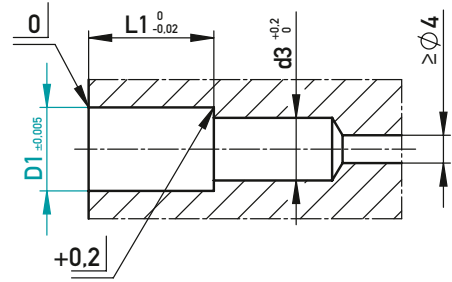
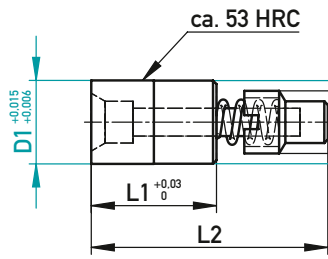




BELÜFTUNGSVENTIL, LANG – GEHÄRTET
 AIR VALVE, LONG – HARDENED



AUF EINEN BLICK

- ▶ Strömungstemperatur Luft max. 130°C
- ▶ Das Ventil nicht unmittelbar am Anspritzpunkt platzieren

AT A GLANCE

- ▶ Air flow temperature max. 130°C
- ▶ Do not place the air valve directly at the point of injection

⌚ min. 4 bar/max. 8 bar

Ⓜ 1.4034

| L1 | d2 | L2 | d3 | D1 | €/1 |
|----|----|------|------|----|-----|
| 11 | 6 | 24 | 6,75 | 8 | • |
| 18 | 8 | 34 | 9 | 12 | • |
| 22 | 12 | 45,5 | 14 | 18 | • |
| | | | | | |
| | | | | | |

✉ 303711/D1

EINBAUBEISPIEL · INSTALLATION EXAMPLE

Kunststoffteil Konturkappe
 Plastic part contour cap

