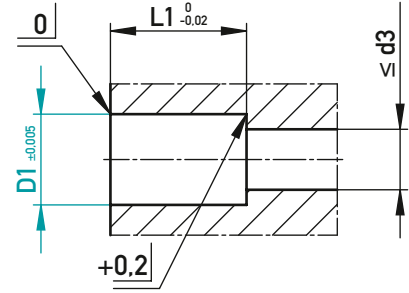
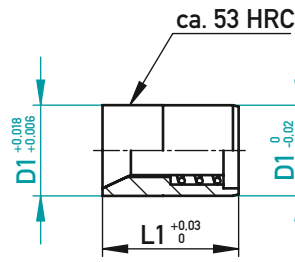
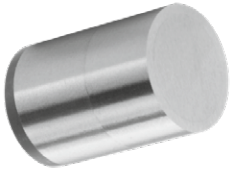




BELÜFTUNGSVENTIL, KURZ – GEHÄRTET

AIR VALVE, SHORT – HARDENED



AUF EINEN BLICK

- ▶ Strömungstemperatur Luft max. 130 °C
- ▶ Das Ventil nicht unmittelbar am Anspritzpunkt platzieren

AT A GLANCE

- ▶ Air flow temperature max. 130 °C
- ▶ Do not place the air valve directly at the point of injection

min. 4 bar/max. 8 bar

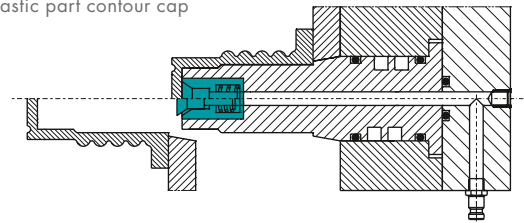
1.4034

| L1 | d3 | D1 | €/1 |
|----|----|----|-----|
| 14 | 5 | 8 | • |
| 18 | 8 | 12 | • |
| 22 | 8 | 18 | • |
| | | | |
| | | | |

303700/D1

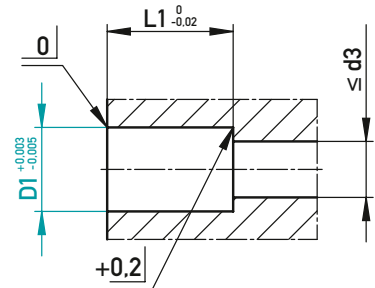
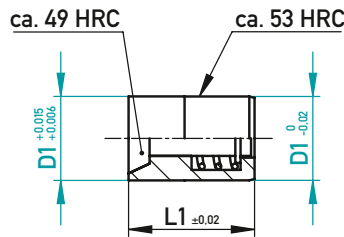
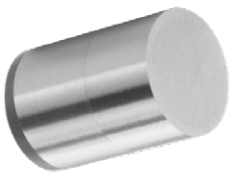
EINBAUBEISPIEL · INSTALLATION EXAMPLE

Kunststoffteil Konturkappe
Plastic part contour cap



BELÜFTUNGSVENTIL, KURZ – GEHÄRTET

AIR VALVE, SHORT – HARDENED



AUF EINEN BLICK

- ▶ Strömungstemperatur Luft max. 130 °C
- ▶ Das Ventil nicht unmittelbar am Anspritzpunkt platzieren
- ▶ Für den Einsatz mit weniger Platzbedarf geeignet

AT A GLANCE

- ▶ Air flow temperature max. 130 °C
- ▶ Do not place the air valve directly at the point of injection
- ▶ Suitable for use with less space

min. 4 bar/max. 8 bar

1.4034

| L1 | d3 | D1 | €/1 |
|----|----|----|-----|
| 12 | 4 | 6 | • |
| 12 | 5 | 8 | • |
| 12 | 7 | 10 | • |
| 12 | 8 | 12 | • |
| 20 | 12 | 16 | • |
| | | | |

303701/D1

EINBAUBEISPIEL · INSTALLATION EXAMPLE

Kunststoffteil Konturkappe
Plastic part contour cap

