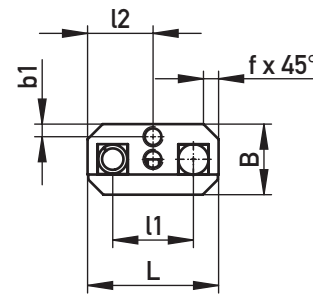
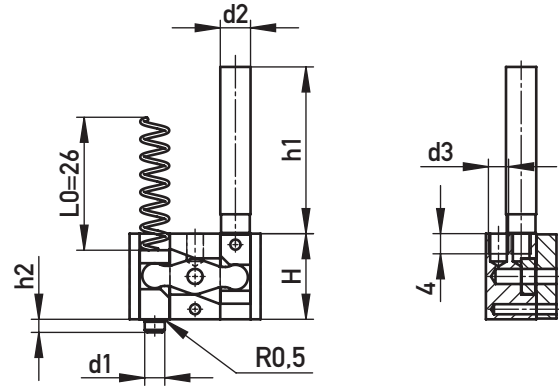


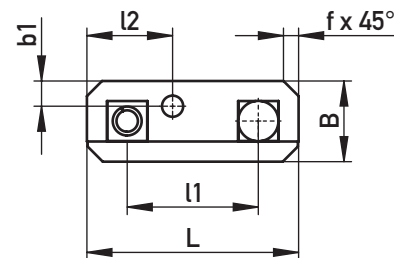
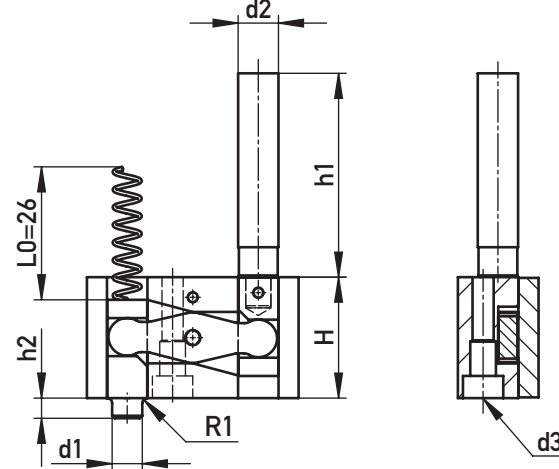


**SCHIEBERHALTEVORRICHTUNG**  
SLIDE HOLDING DEVICE

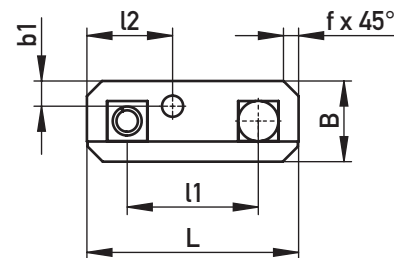
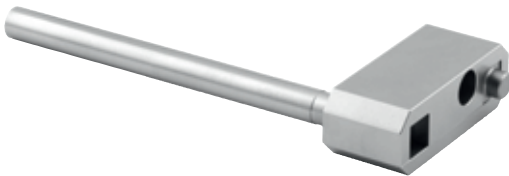
Typ 1  
Type 1



Typ 2  
Type 2



Typ 3  
Type 3

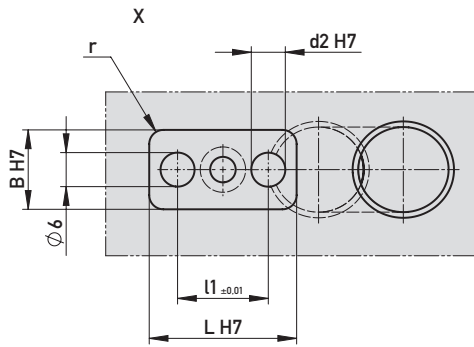


🌡️ 250°C 🏠 1.2767 ~53 HRC; 1.2842 ~51 HRC; 1.2343 o. 1.2210 ~51 HRC

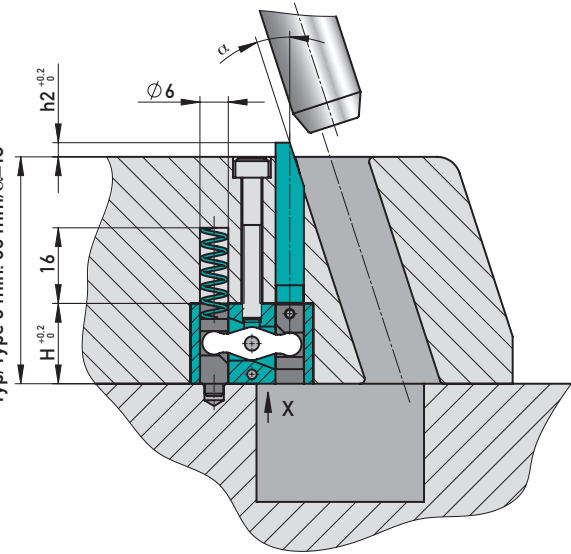
F1	r	t	f	d1	d2	d3	d4	H	h1	h2	l1	l2	b1	L	B	Typ/Type	€/1
0,5 kN	2,5	3,5	2,5	4	6	M4	4,2	17	94	2,7	16	13	2,5	26	14	1	•
1 kN	3,0	4,5	3,0	6	8	M4	6,2	24	105	4,0	26	17	5,0	42	16	2	•
2 kN	5,0	5,5	5,0	8	10	M5	8,2	25	115	5,0	40	24	6,0	60	20	3	•

☒ 295142/Typ

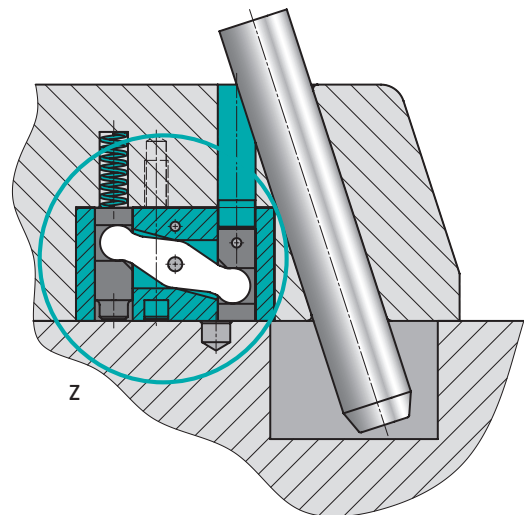
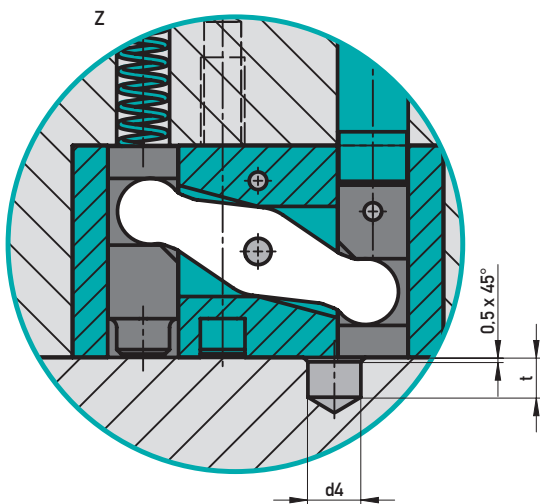
**EINBAUBEISPIEL TYP 1 · INSTALLATION EXAMPLE TYPE 1**



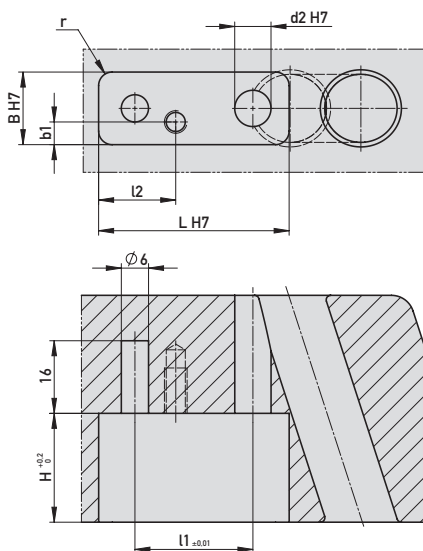
F1 [kn]  
 Typ/Type 1 min. 42 mm/ $\alpha=18^\circ$   
 Typ/Type 2 min. 52 mm/ $\alpha=18^\circ$   
 Typ/Type 3 min. 60 mm/ $\alpha=18^\circ$



**EINBAUBEISPIEL TYP 2/3 · INSTALLATION EXAMPLE TYPE 2/3**



Variante 1/  
Version 1



Variante 2/  
Version 2

